



P15-006

Thoreau Elementary  
School

Home of the Eagles

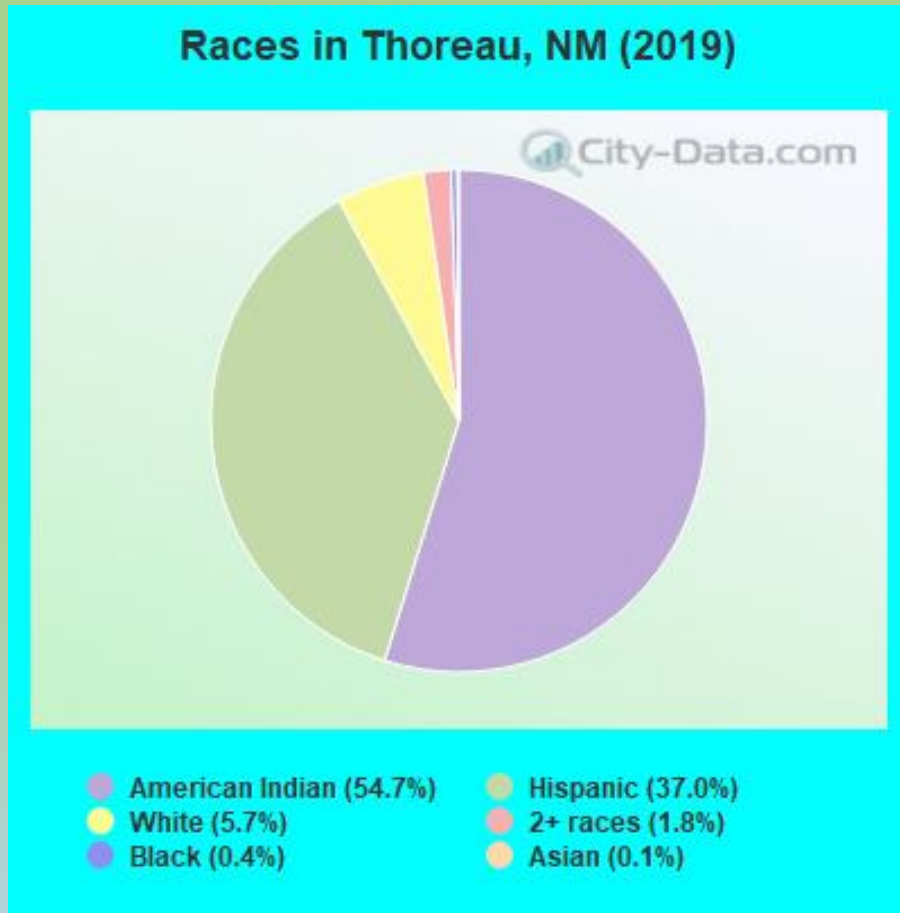
REPLACEMENT & RENOVATION

PRESENTED BY RICHARD DICKS & BRADBURY STAMM  
DEKKER PERICH SABATINI ARCHITECTURE AND DESIGN

## Thoreau New Mexico Fun Facts

- ❖ Thoreau, New Mexico, is located 107 statute miles west of Albuquerque, on I-40 (Route 66) and 32 statute miles east of Gallup.
- ❖ Thoreau is located on the 1926 to 1937 alignment of Route 66 a historic landmark, it is the site of the historical Roy T. Herman's Garage and Service Station, listed in the National Register of Historic Places.
- ❖ The town started its life as an Army Air Corps base. Supporting the 769<sup>th</sup> Aircraft Control and Warning Squadron. Base was closed in 1961.
- ❖ It was originally known as "Mitchell," after the base's barber, and later changed to "Theroux," after its paymaster. Somehow the spelling got changed to "Thoreau," but anyone who pronounces it "Thor-OH," as in Henry David, is instantly branded himself an outsider.

# Thoreau Population Demographic



American Indian 54.7%  
Hispanic 37.0%  
White alone 5.7%  
Two or more races 1.8%  
Black alone .04%  
Asian .01%

# History of Thoreau Elementary School

- ❖ Thoreau ES was completed 1956
- ❖ Twenty (20) Teacher Housing units 1963
- ❖ Gymnasium addition completed 1979
- ❖ Classroom addition completed 1986
- ❖ Concrete Masonry Unit (CMU) construction
- ❖ Combination Built up and Rolled roofing
- ❖ Twelve (12) portables



MCKINLEY COUNTY  
THOREAU  
ELEMENTARY  
SCHOOL



2015. 11. 18 9:54

# Project Timeline

- ❖ Public School Capitol Outlay Council (PSCOC) Award Timeline
  1. Original application for Thoreau ES was for planning and design to renovate existing facilities and add classrooms to replace portables, to adequacy, for 304 students, grades K-5.
  2. wNMCI: 10
  3. Ranking: 3
  4. Award Year: 2014-2015
  5. Application;
  6. Approval Letter was issued: 01.05.2015
  7. MOU-1 November 12, 2014: Planning and Design funding to Adequacy \$1,872,088.

8. MOU-2 12.05.2018: Construction funding to Adequacy \$16,933,244
9. MOU-3 08.31.2021: Pre-K funding \$433,239
10. Original Maximum Allowable Construction Cost (MACC): \$12,690,392
11. Total Project Cost: \$21,590,932
12. State and Local Match 81% State, 91% District



# Project Team

- Gallup McKinley County School District (GMCS)
- Public School Facility Authority (PSFA)
- Dekker/Perich/Sabatini (DPS)
- Bradbury Stamm Construction
- Bohannan Houston
- Bridgers and Paxton

Design

NOT FOR CONSTRUCTION

New Thoreau Elementary School  
6 4th Avenue, Thoreau, NM 87323

85%  
CONSTRUCTION DOCUMENTS

REVISIONS  
▲  
▲  
▲  
▲  
▲

DRAWN BY: Author  
REVIEWED BY: Approver  
DATE: 07.14.2016  
PROJECT NO: 15-0047

DRAWING NAME  
CODE ANALYSIS

SHEET NO  
G1101

SHEET LEGEND

- ROOM NAME
- ROOM NUMBER
- AREA OF ROOMS PER OCCUPANT (R/C)
- OCCUPANT LOAD PER ROOM
- R/C OCCUPANT LOAD/RECTION OF EGRESS
- MAXIMUM OCCUPANT LOAD FOR DOOR (SECTION 1005.1)
- ACTUAL OCCUPANT LOAD FOR DOOR
- WIDTH OF DOOR (IN INCHES)
- DIRECTION OF EGRESS
- NUMBER OF OCCUPANTS EXITING
- FEC FIRE EXTINGUISHER CABINET
- FEB FIRE EXTINGUISHER BRACKET
- 2 HOUR SEPARATION
- 1 HOUR SEPARATION

6. PLUMBING FEATURE REQUIREMENTS (SECTION 2902)

OCCUPANT LOADS	TOTAL	MALE	FEMALE
EDUCATIONAL ASSEMBLY	271	136	136
EDUCATION	11	11	0
MALE	11	11	0
FEMALE	0	0	11
TOTAL	282	147	135

PLUMBING FEATURES REQUIRED: 26 24 12 2  
PLUMBING FEATURES PROVIDED: 27 27 12 3

5. DEGREE OF EGRESS (CHAPTER 10)

OCCUPANT LOAD (TABLE 1004.1)

EDUCATION OCCUPANT LOAD:	1,873
ASSEMBLY OCCUPANT LOAD:	232
TOTAL OCCUPANT LOAD:	2,105

EGRESS REQUIREMENTS:

- MINIMUM NUMBER OF EXITS FOR A TOTAL OCCUPANT LOAD OF MORE THAN 500 IS 4 EXITS PER TABLE 1021.1. 8 TOTAL EXITS PROVIDED.
- TOTAL ALLOWABLE EXIT ACCESS LENGTH IN SPRINKLER SYSTEM PER TABLE 1016.1 IS 204 FT.
- MAXIMUM OCCUPANT LOAD FOR SPACE WITH ONE EXIT IS 49 OCCUPANTS PER TABLE 1016.1.
- REQUIRED FIRE RESISTANCE RATING OF CORRIDOR FOR 1 OCCUPANT WITH SPRINKLER SYSTEM IS 90 MIN PER TABLE 1016.1.

4. GENERAL BUILDING HEIGHTS AND AREAS (CHAPTER 10)

ALLOWABLE HEIGHT (TABLE 504.3): 79'-0"

ACTUAL MAXIMUM HEIGHT: 54'-0"

ALLOWABLE NUMBER OF STORES ABOVE GRADE PLANE: 3 STOREYS

ALLOWABLE AREA FACTOR (TABLE 506.2): 58,000 SF

EXISTING GYMNASIUM TO REMAIN: 6,169 SF

NEW BUILDING AREA: 61,831 SF

TOTAL BUILDING AREA: 67,999 SF

ALLOWABLE AREA DETERMINATION (SEC. 506.2):  
A3 = A1 + (N3 X 3)

A1 ALLOWABLE AREA:	62,710 SF
A1 + TABULAR ALLOWABLE AREA FACTOR (TABLE 506.2):	68,000
N3 + TABULAR ALLOWABLE AREA FACTOR FOR NONSPRINKLERED BUILDINGS:	14,900
IF AREA FACTOR INCREASE DUE TO FRONTAGE:	47
ALLOWABLE AREA = 68,000 + (14,900 X 4.7):	140,113
ALLOWABLE AREA = 68,000 + 9,715:	77,715
ALLOWABLE AREA: 62,710 SF:	62,710

FRONTAGE INCREASE:  
94'-6" (291.00) - 299'00"  
94'-21"  
94'-8"

3. USE AND OCCUPANCY CLASSIFICATION (CHAPTER 10)

OCCUPANCY GROUP: E (EDUCATIONAL)

NOTE: 1. ASSEMBLY AREAS ACCESSORY TO GROUP E ARE NOT CONSIDERED A SEPARATE OCCUPANCY SECTION 101.3.1.

REQUIRED OCCUPANCY SEPARATIONS (SECTION 108.2.4): NONE

NOTE: ACCESSORY OCCUPANCY SHALL NOT OCCUPY MORE THAN 10 PERCENT OF THE BUILDING AREA PER SECTION 108.2.3.

INCIDENTAL ACCESSORY OCCUPANCIES (108.2.5): NONE

2. TYPE OF CONSTRUCTION (CHAPTER 10)

CONSTRUCTION CLASSIFICATION (SECTION 102.2): TYPE III

FIRE RESISTANCE RATING FOR BUILDING ELEMENTS (TABLE 601):

SEPARATING EXTERIOR WALLS:	09HS
FLOOR AND ROOF CONSTRUCTION:	09HS
SEPARATING INTERIOR WALLS:	09HS
NONSEPARATING INTERIOR WALLS:	09HS

FIRE RESISTANCE RATING OF EXTERIOR WALLS BASED ON FIRE SEPARATION DISTANCE (TABLE 602):

NORTH - SEPARATION DISTANCE 750' =	09HS
SOUTH - SEPARATION DISTANCE 750' =	09HS
EAST - SEPARATION DISTANCE 750' =	09HS
WEST - SEPARATION DISTANCE 750' =	09HS

3. FIRE PROTECTION SYSTEMS (CHAPTER 9)

- BUILDING IS EQUIPPED THROUGHOUT WITH A QUICK RESPONSE AUTOMATIC SPRINKLER SYSTEM AS REQUIRED FOR "E" OCCUPANCY (902.3).
- BUILDING IS EQUIPPED THROUGHOUT WITH A FIRE ALARM AND DETECTION SYSTEM AS REQUIRED FOR "E" OCCUPANCY (902.3).
- PORTABLE FIRE EXTINGUISHERS ARE PROVIDED IN THE COMPUTER ROOMS AND KITCHEN AS REQUIRED FOR "E" OCCUPANCY (904.1) AND NOT EXCEED 75 FEET SEPARATION DISTANCE (TABLE 904.1).

GENERAL SHEET NOTES

- EXIT SIGNS WITH BATTERY BACK-UP ARE INDICATED ON ELECTRICAL SHEETS.
- EMERGENCY LIGHTING IS INDICATED ON ELECTRICAL SHEETS.
- SMOKE DRAWINGS FOR FIRE PROTECTION SYSTEM SHALL BE SUBMITTED TO FIRE MARSHAL'S OFFICE FOR REVIEW PRIOR TO INSTALLATION.
- SMOKE DRAWINGS FOR FIRE ALARM SYSTEM SHALL BE SUBMITTED TO FIRE MARSHAL'S OFFICE FOR REVIEW PRIOR TO INSTALLATION.
- SEE SHEET G-102 FOR TYPICAL ACCESSIBLE MOUNTING HEIGHTS.
- CONTRACTOR AND DISTRICT TO COORDINATE WITH ADDRESSING STAFF REGARDING INTERIOR ROOM AND EXTERIOR BUILDING ALPHA NUMERIC LABELING.
- LOCATIONS OF EXIT SIGNS AND EMERGENCY LIGHTING IS SUBJECT TO REVIEW BY FIRE MARSHAL AND CODE OFFICIAL PRIOR TO INSTALLATION.
- SMOKE DRAWINGS FOR FIRE PROTECTION AND ALARM SYSTEMS SHALL INCLUDE MANUAL ACTIVATION DEVICE LOCATIONS FOR HOODS INDICATED AT A MINIMUM OF 10' AND A MAXIMUM OF 20' FROM EACH SYSTEM DUCT. SMOKE DETECTION, SPRINKLER PROTECTION REQUIRED IN FREEZER AND COOLER.
- SMOKE DRAWINGS OF STAGE CURTAIN TO FIRE MARSHAL FOR REVIEW PRIOR TO INSTALLATION.

APPLICABLE CODES

2015 INTERNATIONAL BUILDING CODE (IBC)

PER 2015 NEW MEXICO COMMERCIAL BUILDING CODE (CMBC) SECTION 14.2.8

NOTE: ALL SECTION AND TABLE REFERENCES IN CODE SUMMARY ARE TO IBC UNLESS NOTED OTHERWISE.

2012 INTERNATIONAL PLUMBING CODE (IPC)

PER 2009 NEW MEXICO PLUMBING CODE (NMPC) SECTION 14.8.2.5

2012 INTERNATIONAL MECHANICAL CODE (IMC)

PER 2009 NEW MEXICO MECHANICAL CODE (NMMC) SECTION 14.8.2.5

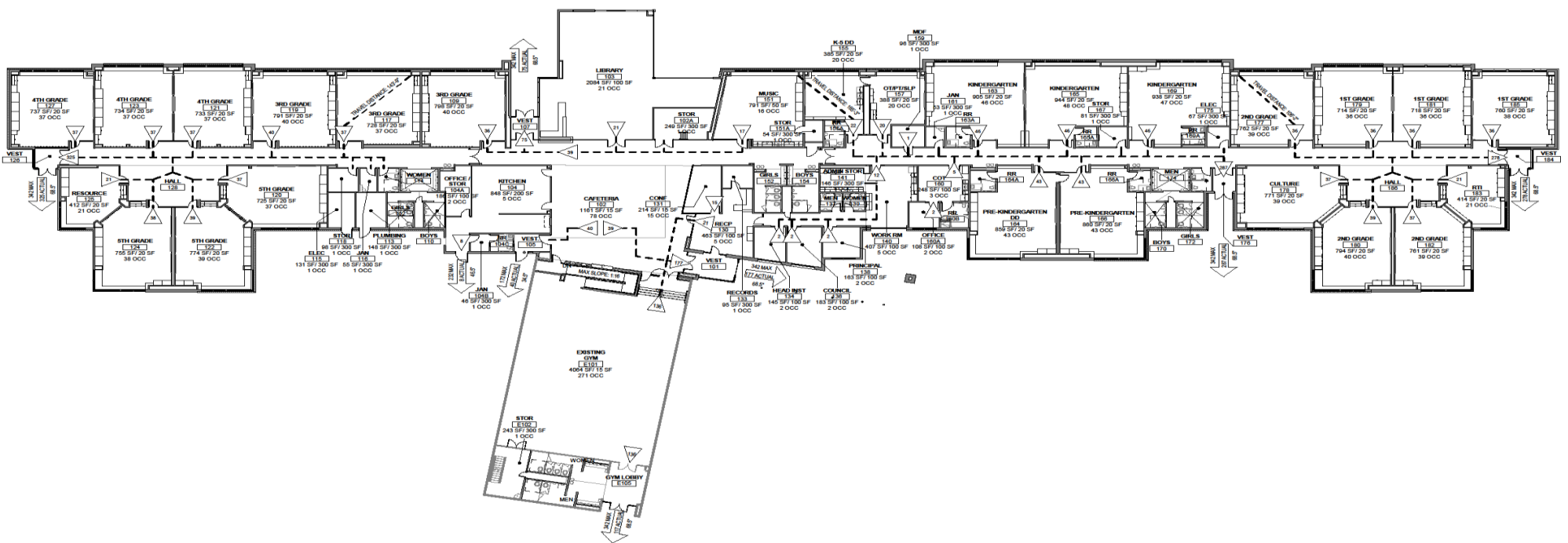
2014 NATIONAL ELECTRICAL CODE (NEC)

PER 2014 NEW MEXICO ELECTRICAL CODE (NMNEC) SECTION 14.16.4.8

2009 INTERNATIONAL ENERGY CONSERVATION CODE (IECC)

PER 2009 NEW MEXICO ENERGY CONSERVATION CODE (NMNEC) SECTION 14.7.4.8

ICC-ANSI A117.1 - 2009, ACCESSIBLE AND USABLE BUILDINGS AND FACILITIES



A1 LIFE SAFETY PLAN

7/15/2016 10:41:09 AM

REVISIONS


DRAWN BY	LI
REVIEWED BY	MB, SK
DATE	7/14/2016
PROJECT NO.	15-0047
DRAWING NAME	

DEMOLITION PLAN  
PHASE 1

**GENERAL SHEET NOTES**

1. THE CONTRACTOR SHALL BECOME FAMILIAR WITH THE SITE TO OBTAIN AN UNDERSTANDING OF EXISTING CONDITIONS BOTH ON SITE AND ADJACENT TO THE SITE.
2. CONTRACTOR SHALL BE RESPONSIBLE FOR PROVIDING SAFETY MEASURES TO PROTECT PEDESTRIANS, VEHICLES, AND ALL EXISTING IMPROVEMENTS TO REMAIN.
3. EXISTING UTILITIES ARE SHOWN FOR REFERENCE ONLY. NOT ALL EXISTING UTILITIES APPEAR ON THIS SHEET. CONTRACTOR IS RESPONSIBLE FOR VERIFYING ALL EXISTING UTILITY LOCATIONS BEFORE EXCAVATING. SEE CIVIL AND ELECTRICAL PLANS FOR UTILITIES.
4. UTILITIES SCHEDULED FOR DEMOLITION SHALL BE CARRIED OFF AS CLOSE TO THE SOURCE AS POSSIBLE AND COMPLETELY REMOVED. UTILITY DEMOLITION IS TO BE COMPLETE INSIDE THE LIMITS OF WORK AND INCLUDES, BUT IS NOT LIMITED TO, CONDUIT, PIPE, WIRES, ANCHORS, TIES, ETC.
5. EXISTING UTILITY ITEMS THAT REMAIN SHALL BE DOCUMENTED ON SURVEYED AS-BUILT DRAWINGS THAT SHALL BE TURNED OVER TO THE OWNER AT CONTRACT CLOSE OUT.
6. CONTRACTOR IS RESPONSIBLE FOR ENSURING THAT UTILITIES TO REMAINING BUILDINGS ADJACENT TO THE SITE REMAIN OPERATIONAL. IF UTILITIES TO ADJACENT BUILDINGS ARE AFFECTED, THE CONTRACTOR IS RESPONSIBLE FOR COORDINATING THE TIMING AND DURATION WITH THE OWNER.
7. UNLESS INDICATED, ALL DEMOLITION ITEMS SHALL BE REMOVED AND DISPOSED OF LEGALLY. CONTRACTOR IS RESPONSIBLE FOR PURCHASING REUSE CONTAINERS TO HANDLE ALL DEBRIS TO BE REMOVED. CONTRACTOR IS RESPONSIBLE FOR PAYING FEES ASSOCIATED WITH REMOVAL AND DISPOSAL OF REMOVED ITEMS.
8. ITEMS TO BE SALVAGED AND RELOCATED ON SITE ARE NOTED IN KEYNOTES BELOW. FOR ITEMS TO BE SALVAGED AND RELOCATED TO OWNER, CONTRACTOR IS TO MAINTAIN ITEMS TO OWNER'S DESIGNATED STORAGE AREA.
9. ALL EXISTING SITE MATERIALS NOTED OR NOTED AS TO BE REMOVED SHALL BE PROTECTED AND REMAIN OPERATIONAL DURING CONSTRUCTION. ANY DAMAGE TO EXISTING ITEMS SHALL BE REPAIRED BY THE CONTRACTOR AT NO COST TO THE OWNER.
10. ALL SAWCUTS SHALL BE MADE AT EXISTING JOINTS, UNLESS CUTTING BETWEEN JOINTS IS NECESSARY TO MAKE A SMOOTH TRANSITION TO NEW ABUTTING CONCRETE.
11. CONTRACTOR SHALL ENSURE EMERGENCY EGRESS FROM EXISTING BUILDINGS DURING CONSTRUCTION.

**SHEET KEYED NOTES**

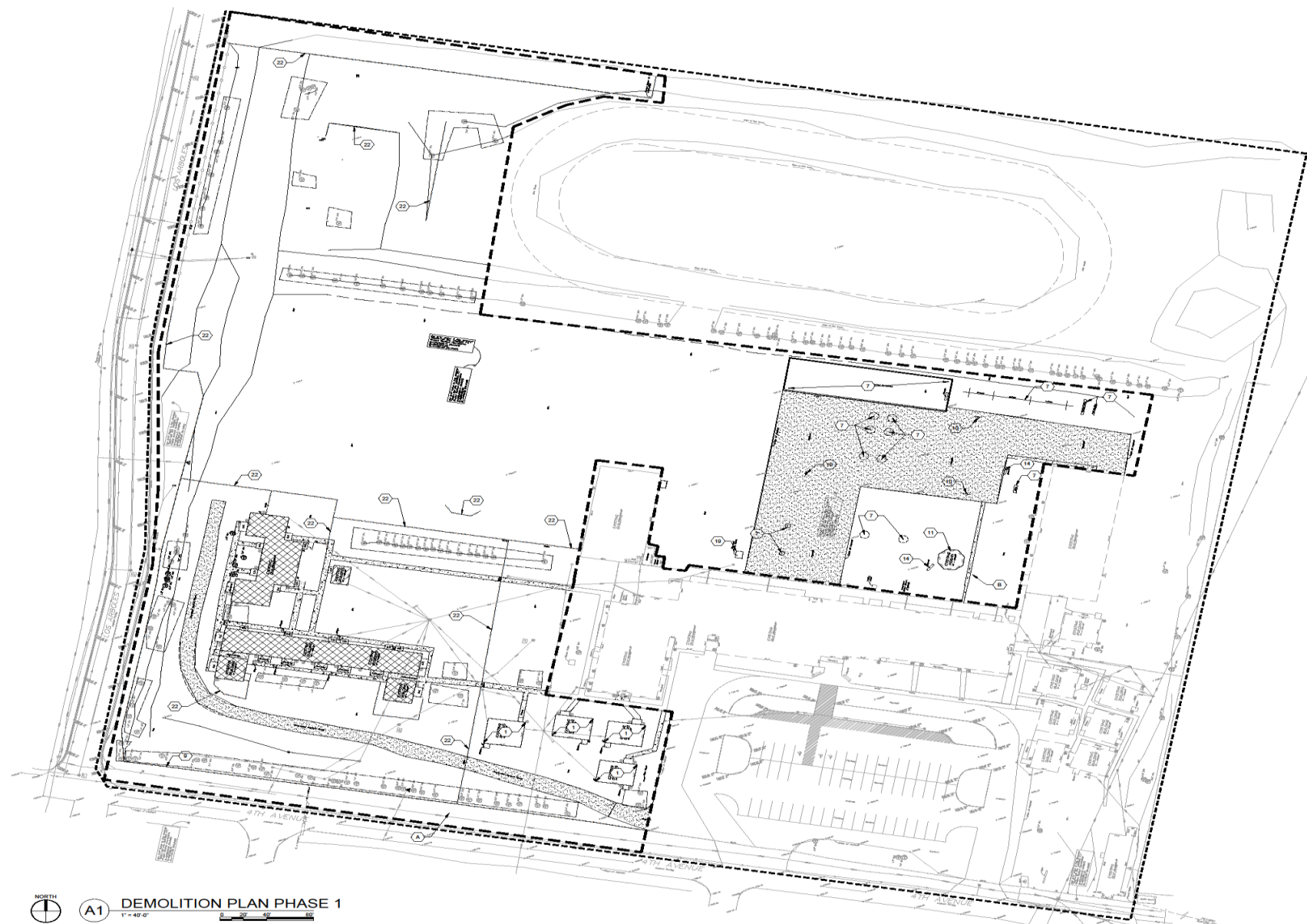
1. REMOVE EXISTING PORTABLE
2. REMOVE EXISTING TREES, LANDSCAPE AND STUMPS
3. REMOVE EXISTING CONCRETE CURB AND GUTTER
4. REMOVE EXISTING OVERHEAD UTILITY
5. REMOVE EXISTING UNDERGROUND UTILITY
6. REMOVE EXISTING DROP INLET
7. REMOVE EXISTING PLAY EQUIPMENT AND RETURN TO OWNER
8. REMOVE EXISTING SIGNAGE AND RETURN TO OWNER
9. EXISTING SIGN TO REMAIN
10. EXISTING SIGNAGE TO REMOVE AND RETURN TO OWNER
11. OWNER TO REMOVE EXISTING HOSING
12. REMOVE PLASTIC PLAY SURFACING EDGING
13. REMOVE LIGHT POLE AND CONCRETE FOOTING
14. REMOVE BENCH AND RETURN TO OWNER
15. NEW ELEMENTARY SCHOOL TO REMAIN OPERATIONAL
16. SITE FLY TO REMAIN
17. EXISTING GYM TO REMAIN
18. EXISTING TRACK TO REMAIN
19. SALVAGE EXISTING PICNIC TABLE AND RETURN TO OWNER
20. REMOVE STORAGE CONTAINER
21. SALVAGE WOOD SHED AND RETURN TO OWNER
22. EXISTING CHAIN LINK FENCE TO SALVAGE AND RELOCATE
23. EXISTING CHURCH. SEE BID LOT A

**BID LOT**

- A. BID LOT #XX DEMOLISH EXISTING CHURCH BUILDING AND STABILIZE AREA OF DEMOLITION

**LEGEND**

- LIMITS OF WORK
- PHASE 1 DEMOLITION BOUNDARY
- EXISTING CHAINLINK FENCE TO SALVAGE AND RELOCATE, SEE AS101
- EXISTING CHAINLINK FENCE TO REMAIN
- TEMPORARY PEDESTRIAN ACCESS TO NEW SCHOOL DURING BUILDING DEMOLITION PHASE
- REMOVE ASPHALT
- REMOVE CONCRETE
- EXISTING SCHOOL TO BE DEMOLISHED
- EXISTING TEACHERAGES TO BE DEMOLISHED
- PROTECT EXISTING TREE DURING CONSTRUCTION
- EXISTING TREE TO REMOVE



**A1 DEMOLITION PLAN PHASE 1**  
1" = 40'-0"

REVISIONS

▲	
▲	
▲	
▲	
▲	

DRAWN BY	LI
REVIEWED BY	MR. SK
DATE	7/14/2016
PROJECT NO.	15-0047
DRAWING NAME	

DEMOLITION PLAN  
PHASE 2

**GENERAL SHEET NOTES**

1. THE CONTRACTOR SHALL BECOME FAMILIAR WITH THE SITE TO OBTAIN AN UNDERSTANDING OF EXISTING CONDITIONS BOTH ON SITE AND ADJACENT TO THE SITE.
2. CONTRACTOR SHALL BE RESPONSIBLE FOR PROVIDING SAFETY MEASURES TO PROTECT PEDESTRIANS, VEHICLES, AND ALL EXISTING IMPROVEMENTS TO REMAIN.
3. EXISTING UTILITIES ARE SHOWN FOR REFERENCE ONLY. NOT ALL EXISTING UTILITIES APPEAR ON THIS SHEET. CONTRACTOR IS RESPONSIBLE FOR VERIFYING ALL EXISTING UTILITY LOCATIONS BEFORE EXCAVATING. SEE CIVIL AND ELECTRICAL PLANS FOR UTILITIES.
4. UTILITIES NOT SHOWN FOR REFERENCE SHALL BE CAPPED OFF AS CLOSE TO THE SURFACE AS POSSIBLE AND COMPLETELY REMOVED. UTILITY DEMOLITION IS TO BE COMPLETE INSIDE THE LIMITS ON WORK AND INCLUDES, BUT IS NOT LIMITED TO, CONDUIT, PIPE, MISER, ANCHORS, TIES, ETC.
5. EXISTING UTILITY STUMPS THAT REMAIN SHALL BE DOCUMENTED ON SURVEYED AS-BUILT DRAWINGS THAT SHALL BE TURNED OVER TO THE OWNER AT CONTRACT CLOSE OUT.
6. CONTRACTOR IS RESPONSIBLE FOR ENSURING THAT UTILITIES REMAINING NEARBY ADJACENT TO THE SITE REMAIN OPERATIONAL. IF UTILITIES TO ADJACENT BUILDINGS ARE AFFECTED, THE CONTRACTOR IS RESPONSIBLE FOR COORDINATING THE TIMING AND DURATION WITH THE OWNER.
7. UNLESS INDICATED, ALL DEMOLITION ITEMS SHALL BE REMOVED AND DISPOSED OF LEGALLY. CONTRACTOR IS RESPONSIBLE FOR OBTAINING ALL NECESSARY PERMITS TO HANDLE ALL DEBRIS TO BE REMOVED. CONTRACTOR IS RESPONSIBLE FOR PAYING FEES ASSOCIATED WITH REMOVAL AND DISPOSAL OF REMOVED ITEMS.
8. ITEMS TO BE SALVAGED AND RETURNED ON SITE ARE NOTED IN KEYNOTES BELOW. FOR ITEMS TO BE SALVAGED AND PROVIDED TO OWNER, CONTRACTOR IS TO HANDLE THE OWNER'S DISMANTLED STRUCTURES AND:
9. ALL EXISTING SITE ITEMS (NOTED OR NOT) ARE TO REMAIN AND SHALL BE PROTECTED AND REMAIN OPERATIONAL DURING CONSTRUCTION. ANY DAMAGE TO EXISTING ITEMS DUE TO CONSTRUCTION IS TO BE REPAIRED BY THE CONTRACTOR AT HIS/HER OWNERS RISK.
10. ALL SANDWICHES SHALL BE MADE AT EXISTING JOINTS. LINES CUTTING BETWEEN JOINTS IS NECESSARY TO MAKE A BRACKET CONNECTION TO NEW AND/ OR CONCRETE.
11. CONTRACTOR SHALL ENSURE EMERGENCY EGRESS FROM EXISTING BUILDINGS DURING CONSTRUCTION.

**SHEET KEYED NOTES**

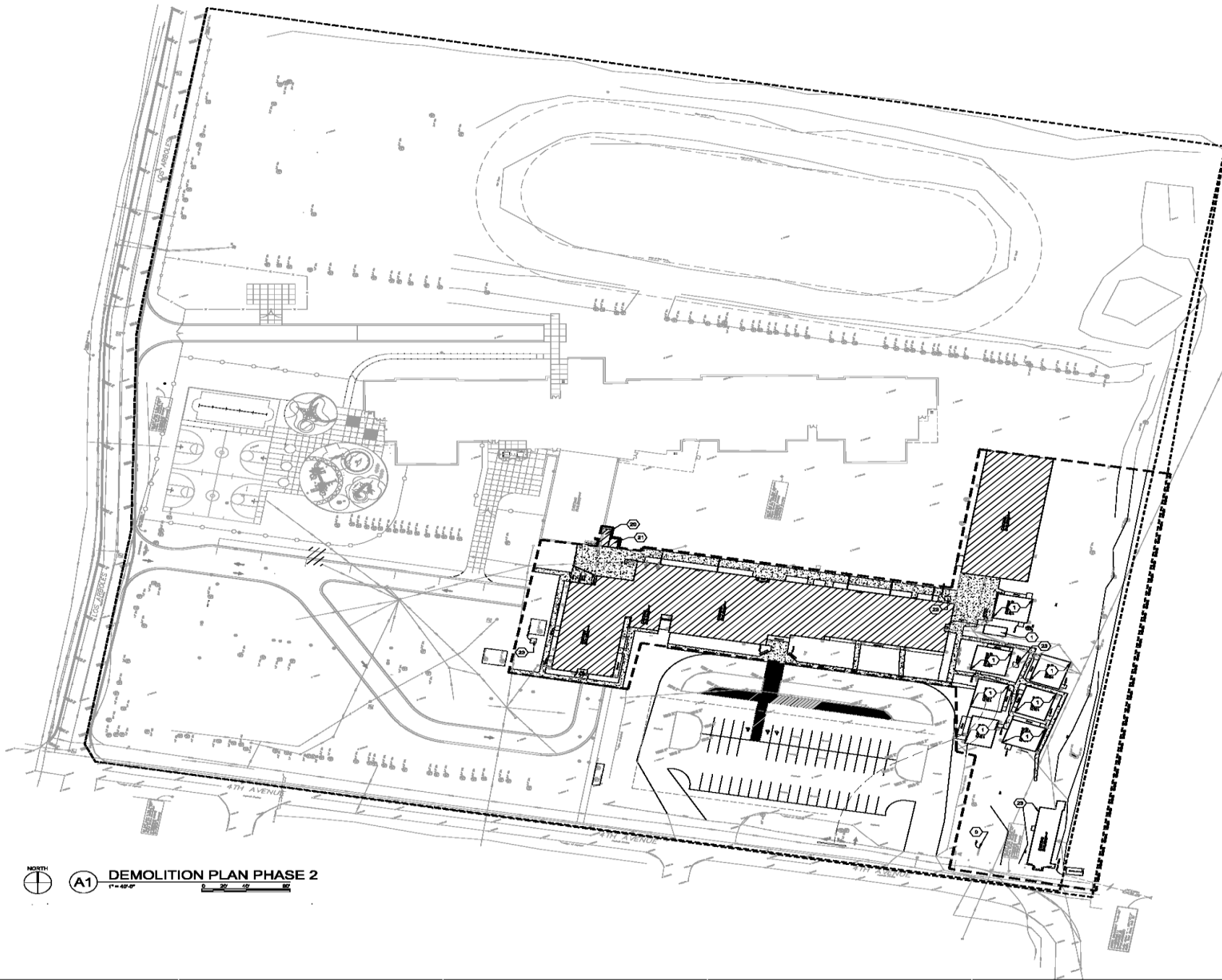
1. REMOVE EXISTING PORTABLE
2. REMOVE EXISTING TREES, LANDSCAPE AND STUMPS
3. REMOVE EXISTING CONCRETE CURB AND GUTTER
4. REMOVE EXISTING OVERHEAD UTILITY
5. REMOVE EXISTING UNDERGROUND UTILITY
6. REMOVE EXISTING SIGN
7. REMOVE EXISTING PLAY EQUIPMENT AND RETURN TO OWNER
8. REMOVE EXISTING SIGNAGE AND RETURN TO OWNER
9. EXISTING SIGN TO REMAIN
10. EXISTING SIGNAGE TO REMOVE AND RETURN TO OWNER
11. OWNER TO REMOVE EXISTING HOOD
12. REMOVE PLASTIC PLAY SURROUNDING EDGING
13. REMOVE LIGHT POLE AND CONCRETE FOOTING
14. REMOVE SIGNAGE AND RETURN TO OWNER
15. NEW ELEMENTARY SCHOOL TO REMAIN OPERATIONAL.
16. UTILITY TO REMAIN
17. EXISTING TRUCK TO REMAIN
18. EXISTING TRUCK TO REMAIN
19. SALVAGE WOOD BIRD HOLE AND RETURN TO OWNER
20. REMOVE STORAGE CONTAINER
21. SALVAGE WOOD BIRD HOLE AND RETURN TO OWNER
22. EXISTING CHAIN LINK FENCE TO SALVAGE AND RELOCATE
23. EXISTING CHAIN LINK FENCE TO SALVAGE AND RELOCATE

**BID LOT**

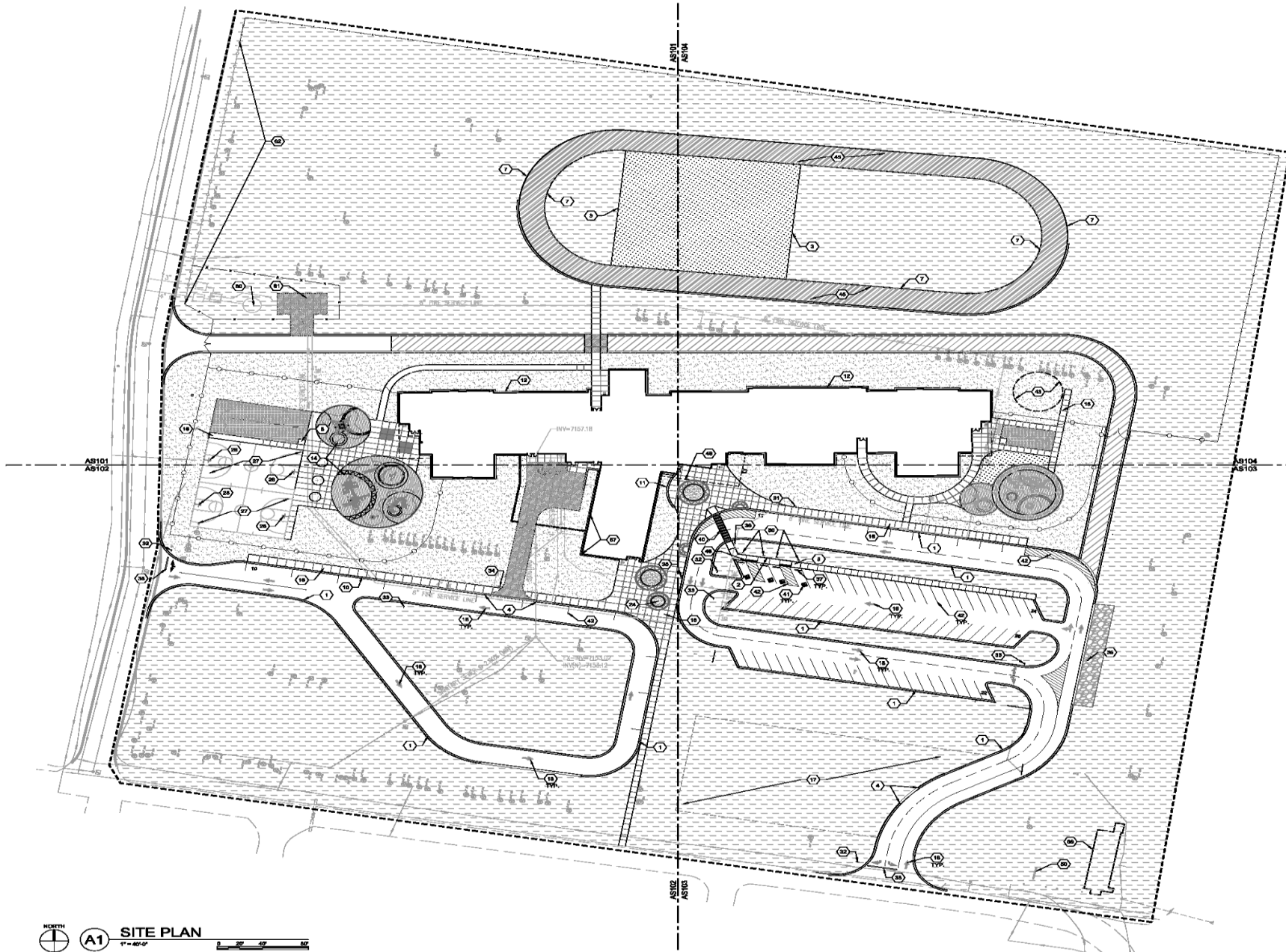
- A. BID LOT #04 DEMOLISH EXISTING CHURCH BUILDING AND STABILIZE AREA OF DEMOLITION

**LEGEND**

- LIMITS OF WORK
- - - PHASE 1 DEMOLITION BOUNDARY
- - - EXISTING CHAIN-LINK FENCE TO SALVAGE AND RELOCATE, SEE AS'01
- - - EXISTING CHAIN-LINK FENCE TO REMAIN
- - - TEMPORARY PEDESTRIAN ACCESS TO NEW SCHOOL DURING BUILDING DEMOLITION PHASE
- REMOVE ASPHALT
- REMOVE CONCRETE
- EXISTING SCHOOL TO BE DEMOLISHED
- EXISTING TEACHERAGES TO BE DEMOLISHED
- PROTECT EXISTING TREE DURING CONSTRUCTION
- EXISTING TREE TO REMOVE



**A1 DEMOLITION PLAN PHASE 2**  
1"=40'-0"



**SITE PLAN**  
1" = 40'-0"

**GENERAL SHEET NOTES**

- A. CONTRACTOR TO COORDINATE WITH OWNER FOR ALLOWABLE STAGING AREAS DURING CONSTRUCTION.
  - B. SEE CIVIL PLANS, DETAILS AND SPECIFICATIONS FOR ADDITIONAL GRADING, DRAINAGE AND UTILITY INFORMATION.
  - C. REFER TO CIVIL HORIZONTAL CONTROL PLAN FOR ON-SITE BUILDING LOCATION, AND OTHER DIMENSIONS NOT SHOWN ON THIS SHEET.
  - D. ALL UTILITY PLAN DIMENSIONS ARE DEFINITIVE. SEVERAL GOULDS TO FOLLOW PATHS AS SHOWN ON SITE PLANS.
- SHEET KEYED NOTES**
- NOTE: NOT ALL REVISIONS ARE LISTED ON THIS SHEET
1. CONCRETE CURB AND GUTTER, SEE CIVL
  2. CONCRETE FINISH CURB, SEE A5A8001
  3. CONCRETE MOW CURB, SEE A5A8001
  4. CONCRETE ROLL CURB, SEE A5A8001
  5. CONCRETE CONTROL JOINT, SEE A5A8001
  6. CONCRETE CURB/STAIR WALK, SEE A5A8001
  7. CONCRETE PLAYGROUND RAMP, SEE A5A8001
  8. CONCRETE PLAYGROUND RAMP, SEE A5A8001
  9. CONCRETE PLAYGROUND RAMP, SEE A5A8001
  10. 1" X 6" LAM. #1 TRIPING, SEE A5A8002
  11. CONCRETE FINISH WALL, SEE A5A8001
  12. CONCRETE BLENDING APRON, SEE A5A8001
  13. HEAVY DUTY ASPHALT, SEE CIVL
  14. 18" 5TH GRADE PLAYGROUND, SEE PLAYGROUND LEGEND
  15. ACCESSIBLE CONCRETE INPAT TYPE, SEE C5A8001
  16. CONCRETE SIDEWALK, SEE A1A8001
  17. COVER-LOW PARKING
  18. PAVEMENT ARROWS, SEE A5A8002
  19. POURED IN PLACE BURLAP/AGG PATTERN A, SEE C5A8002
  20. DUMPSTER ENCLOSURE, SEE D5A8001
  21. # 11 DOUBLE WELDED WIRE MESH/LANAR GATE, SEE A5A8001
  22. # 11 BRASS 1" WELDED WIRE GATE, SEE A5A8001
  23. PIPE RAILING, SEE C5A8002
  24. 30" FT TALL FENCE, SEE A5A8002
  25. ASPHALT, SEE D5A8002
  26. HOT BITUM. # 2, SEE A5A8002
  27. CONCRETE BASKETBALL COURT, SEE A5A8002
  28. 18" TALL BASKETBALL, SEE A5A8002
  29. NO PARKING SIGN, SEE A5A8002
  30. ACCESSIBLE PARKING SIGN, SEE A5A8002
  31. STUDENT PICKUP AND DROP-OFF SIGN, SEE A5A8002
  32. STOP SIGN, SEE A5A8002
  33. DO NOT ENTER SIGN, SEE A5A8002
  34. REVERSE VEHICLE OR ONE V SIGN, SEE A5A8002
  35. ONE WAY SIGN, SEE A5A8002
  36. PRESTRESS CROSSING SIGN, SEE A5A8002
  37. PARKING SIGN, SEE A5A8002
  38. PAVEMENT STOP LINE, SEE A5A8002
  39. CONCRETE FINISH WALL, SEE A5A8001
  40. PAINTED SIDEWALK, SEE C5A8002
  41. CONCRETE FINISH WALL, SEE A5A8001
  42. 1/2" X 1/2" TRIPING, 4" WIDE RED LECTIVE PAINT COLOR WHITE, SEE C5A8002
  43. HOODLUM LOCATION TO BE BUILT BY OTHER ACCESS
  44. CONCRETE PATTERN TYPE C, SEE C5A8002
  45. REINFORCING TRACK
  46. DEFICITIVE E MARKING SURFACE, SEE C5A8002
  47. CONCRETE PAVEMENT PATTERN TYPE B, SEE C5A8002
  48. PREC. AND KINDERGARTEN PLAY PLAYGROUND, SEE PLAYGROUND LEGEND
  49. BUILDING SHADE CANOPY, SEE ARCHITECTURE
  50. EXISTING ENTRANCE SIGN
  51. TRANSFORMER, SEE ELECTRICAL DRAWINGS TSD
  52. RANDED PRESTRESS CROSSWALK, SEE C5A8002
  53. CONCRETE PAVEMENT PATTERN TYPE C, SEE C5A8002
  54. NEW CHAIN LINK FENCING, SEE C5A8001
  55. PREC. FINISH WALL, SEE CIVL TSD
  56. CONCRETE FINISH CURB TO PLAY AREA, SEE C5A8001
  57. LOCATION FOR BUILDING MURAL, TO BE DONE BY OTHERS
  58. SIGNAGE SEE AREA 10 TO BE DONE HAZUDD BY OTHERS
  59. POURED IN PLACE BURLAP/AGG PATTERN S, SEE C5A8002
  60. WATER TANK, SEE CIVL
  61. FIRE PUMP, SEE CIVL
  62. EXISTING CHAIN LINK FENCING TO REMAIN IN PLACE
  63. ROOFING WALL, SEE A5A8001
  64. CONCRETE FINISH CURB, SEE DETAIL A5A8001
  65. FIRE ACCESS ROAD, SEE LEGEND AND BID LOT A
  66. EXISTING CHURCH, SEE BID LOT B

**BID LOT**

- A. BID LOT #1 (SEE NUMBER FROM ARCHITECTURE) REPLACE LABEL COULSES ON FIRE LOOP WITH ASPHALT. DO NOT INSTALL FLUSH CURB AT ASPHALT AND FRAME COULSES TRANSITION TO THE BASKETBALL COURT.
- B. BID LOT #2 DEMOLISH EXISTING CHURCH BUILDING AND STABLE AREA THAT HAS BEEN DEMOLISHED

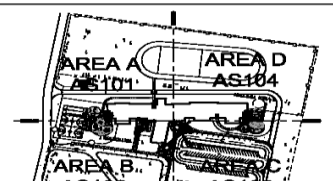
**PLAYGROUND LEGEND**

- PRE-K AND KINDERGARTEN PLAY EQUIPMENT**
- A. LANDSCAPE STRUCTURES EQUIPMENT COURT PIECE MODEL #974
  - B. LANDSCAPE STRUCTURES EQUIPMENT MIDDLE BENCH
  - C. LANDSCAPE STRUCTURES EQUIPMENT GAZE SPRINGER
  - D. LANDSCAPE STRUCTURES EQUIPMENT 8' SQUARE AND 2 BUCKET BEATS
  - E. LANDSCAPE STRUCTURES EQUIPMENT 8' SQUARE AND 2 BUCKET BEATS
- SET GRADE - 8" L GRADE PLAYGROUND COLCHINET**
- A. LANDSCAPE STRUCTURES EQUIPMENT MIDDLE C3 BENCH 12' PIECE
  - B. LANDSCAPE STRUCTURES EQUIPMENT LINKS BENCH
  - C. LANDSCAPE STRUCTURES EQUIPMENT FLYWHEEL SPRINGER
  - D. LANDSCAPE STRUCTURES EQUIPMENT MIDDLE BOARD
  - E. LANDSCAPE STRUCTURES EQUIPMENT CIRCLE BENCH
  - F. LANDSCAPE STRUCTURES EQUIPMENT CUSTOM PLAYPORTER
  - G. LANDSCAPE STRUCTURES EQUIPMENT CUSTOM PIECE MODEL #1006
  - H. LANDSCAPE STRUCTURES EQUIPMENT TO SWINGS

**LEGEND**

- LIMITS OF DISTURBANCE**
- THRUH RECEIPTABLE, SEE SPECIFICATIONS
  - EXISTING CHAIN LINK FENCE TO REMAIN IN PLACE, SEE SPECIFICATIONS
  - 8" TALL WELDED WIRE FENCING, SEE DETAIL C5A8001
  - NEW CHAIN LINK FENCING, SEE DETAIL C5A8001 AND SPECIFICATIONS
  - 12" TALL WELDED WIRE FENCING, SEE DETAIL C5A8001 AND SPECIFICATIONS
  - ENGINEERED WOOD CHIPS, SEE SPECIFICATIONS
  - ROCK MULCH, COLOR BROWN
  - POURED IN PLACE BURLAP/AGG, SEE C5A8001
  - 2" 4" ANGULAR COBBLE WITH RUPWRAP, COLOR: RED/BROWN, SEE SPECIFICATIONS
  - SYNTHETIC TURF, SEE SPECIFICATIONS AND DETAILS D4A8002
  - ENGINEERED WOOD CHIPS, SEE SPECIFICATIONS
  - BASE COURSE
  - HEAVY DUTY CONCRETE, SEE CIVL
  - EXISTING TREE TO REMAIN

**VICINITY MAP**



7601 JEFFERSON NE, SUITE 100  
ALBUQUERQUE, NM 87109  
505.761.9700 / DPSDESIGN.ORG

ARCHITECT

ENGINEER

PROJECT

**New Thoreau Elementary School**  
64th Avenue, Thoreau, NM 87523

**85% CONSTRUCTION DOCUMENTS**

- REVISIONS**
- ▲
  - ▲
  - ▲
  - ▲
  - ▲

DRAWN BY: LI  
REVIEWED BY:  
DATE: 7/14/2016  
PROJECT NO.: 15-0047  
DRAWING NAME:

**OVERALL SITE PLAN**

SHEET NO.  
**AS100**

# Ground Breaking













Construction













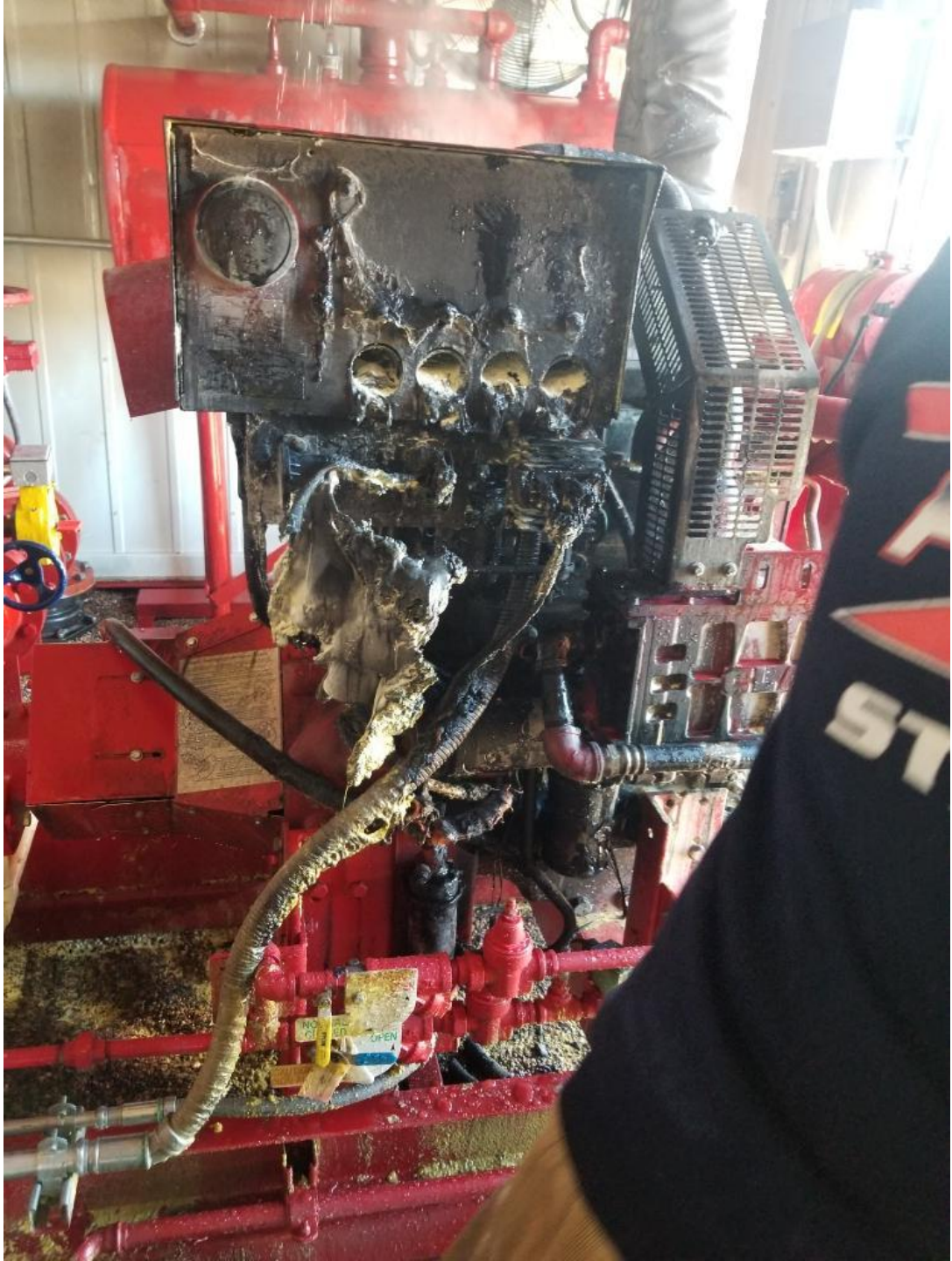
















BURNLEY COUNTY  
FOREAL  
ELEMENTARY  
SCHOOL







THOREAU  
ELEMENTARY



THOREAU  
ELEMENTARY





THOREAU  
ELEMENTARY









THOREAU ELEMENTARY SCHOOL





**THOREAU ELEMENTARY SCHOOL**

**FALL FESTIVAL**  
**NOV 6 6-8 PM**



2015.11.18 9:51