

The following information/questions need to be provided at the beginning of any capital project that includes mechanical systems.

General Questions:

1. **Water** quality *-need at least the pH and solids, but full analysis is preferable*
2. Number of **zones** in the system *– Σ (classrooms) + library + cafeteria/gym + offices/bathrooms(=1) + hallways(=1)*
3. Cost of **gas**, and whether it is propane or natural gas, and if it's propane, what the cost would be to run gas
4. Cost of **electricity**, and whether the local utility will offer pricing advantages for specific system types
5. All relevant incentive programs and off-peak rates for each energy provider.

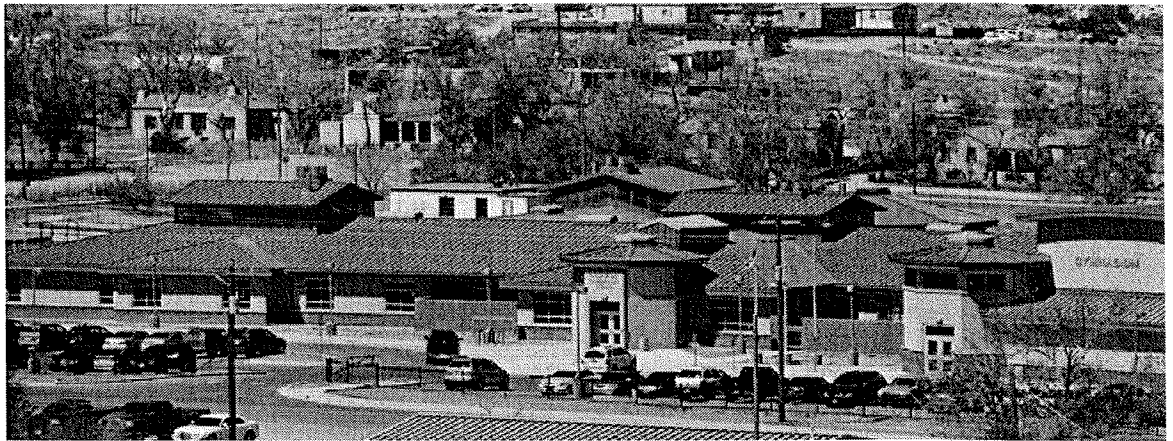
District-specific Questions:

1. What specific **hardware** do you prefer, or would you want to **standardize**?
2. If you use **DDC**, what **control system** vendor do you currently use? Would you want to stay with the same system, or use a different one?
3. What local **maintenance** or repair **skills** do you have available at the school?
4. What is **most painful** to you now? What specific systems or technologies do you have the most trouble with?
5. Is the school used **year-round**, and to what extent?



New Mexico Public School Facilities Authority

Partnering with New Mexico's communities to provide quality, sustainable school facilities for our students and educators.



Menu

Search

Energy Management Program (EMP):

EMP:



M&V Meters Performance Guide



PSFA M&V Program



Energy Programs for NM Schools



Standard Energy Questions



Energy Question Spreadsheet



Guidance on Lifecycle Cost Analysis



Baseline LCCA Values for New Mexico Schools



ASHRAE Advanced Energy Design Guide for K-12 School Buildings



Energy Star Certification

M&V Meters Manual:



D-100 Dual Network Interface Installation Guide



F-3100 Inline Magmeter Manual

F-5200 Thermal Mass Flowmeter Manual

Shark 100 Electric Sub Meter Manual